

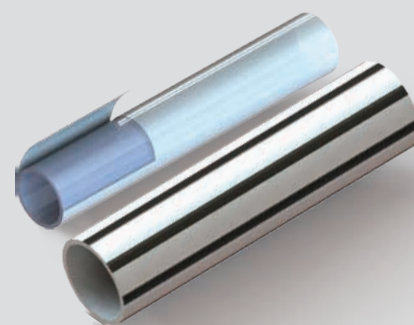


ENIB Co., Ltd.

# PFA SPECIAL TUBE

## OVERVIEW & FEATURES

1. Manufactured with the latest extrusion equipment and can support various high purity chemicals
2. Produce and supply high-performance products that meet customer's requirements.
  - 1) Compatible to piping standards
  - 2) Compatible to various fitting standards
  - 3) Product customization possible based on customer's requests

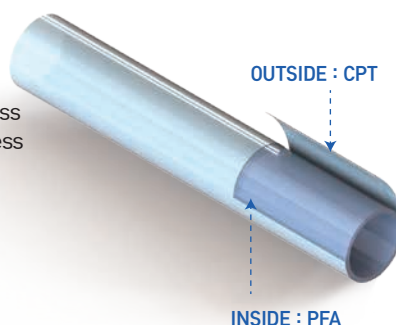


## 1. LPP TUBE

1) The high purity PFA inner layer allows the LPP tube to meet the chemical and semiconductor plants' strict specification requirements.

### 2) PFA Materials Offered

- Daikin - Inner Layer : 231SH  
Outer Layer : CPT
- Inner Layer : 70% of the total wall thickness
- Outer Layer : 30% of the total wall thickness



## 2. ESD TUBE

1) ESD Tubes can prevent problems caused by electrostatic discharge during bulk solvent dispensing operations at semiconductor manufacturing plants.

- Prevents possible ignitions of spark, combustible gas, and organic solvents caused by static electricity.
  - Prevents destruction of property from high voltage current, temperature, humidity, etc.
  - Prevents possible spark ignitions from fluid friction during transport of organic solvents
- ESD Tube is available in 1/4" to 2" size.

Outer Surface : Conductive Carbon-Loaded PFA



## TECHNICAL DATA

Connection Type	ENIB Flare, Ferrule Connection and Others
Port Size	1/4", 3/8", 1/2", 3/4", 1", 1-1/4", 1-1/2", 2"



## HOW TO ORDER

Product Name	CODE	SIZE	CODE	Length	CODE
PFA Tube	PT	1/4"	04	3M	3M
		3/8"	06	50M	50M
		1/2"	08	100M	100M
		3/4"	12	150M	150M
		1"	16	200M	200M
		1-1/4"	20	ETC	
		1-1/2" (38.1)	24		
		1-1/2" (40)	24-40		
		2"	32		
				Type	CODE
				Roll	RL
				Straight	ST

Example : PT - LPP - 16 - 100M - RL

PT	PFA TUBE
LPP	LPP TUBE
16	1"
100M	100M
RL	Roll Type

Example : PT - ESD - 231 - 04 - 200M - RL

PT	PFA TUBE
ESD-231	ESD - AP231SH
04	1/4"
200M	200M
RL	Roll Type

### “ SMART VALUE OPERATION PRODUCT LINE UP ”

#### ENIB (Extrusion & Injection, Basic Co., Ltd) Corporate Mission :

ENIB is to become a key provider of safe, high performance, and advanced technology device and components for fluid management systems and applications that meet or exceed the needs and requirements of global customers.

62, BANSAN 2-RO, MUNMAK-EUP, WONJU-SI,  
GANGWON-DO, REPUBLIC OF KOREA  
Customer Service Tel : +82 033-743-9200  
Customer Fax : +82 033-743-9201  
[www.enib.co.kr](http://www.enib.co.kr)